

EVIO Labs Medford (pka Kenevir Research)
 540 East Vilas Road, Suite F, Central Point, OR 97502
 541-668-7444 / OLCC 010-1001626980D / www.EVIOLabs.com

4246 RC
Keen CBD
AG-R1044796IHH



Confident Cannabis ID: 1906KR0060.2522

Sample ID: M190783-02

Matrix: Topical

METRC Batch #:

Sampling Method/SOP: SOP.T.20.010

Date Sampled: 06/19/19 09:00

Date Accepted: 06/19/19

Harvest/Process Lot ID:

Batch ID:

Batch Size (g):

Unit for Sale:

Harvest/Production Date:

Cannabinoid Analysis

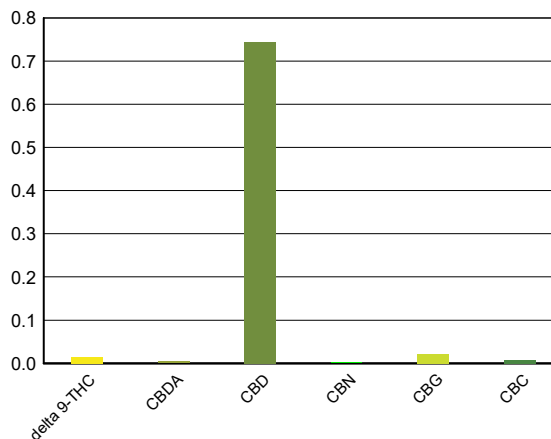
Date/Time Extracted: 06/20/19 14:01

Analysis Method/SOP: SOP.T.40.020

Date/Time Analyzed: 06/20/19 17:50

Cannabinoids	LOQ(%)	mg/g	% weight	Cannabinoid Profile
Total THC ((THCA*0.877)+Δ9THC)		0.146	0.0146	
Total CBD ((CBDA*0.877)+CBD)		7.478	0.7478	

THCA	0.0100	< LOQ	< LOQ
delta 9-THC	0.0100	0.146	0.0146
delta 8-THC	0.0100	< LOQ	< LOQ
CBDA	0.0100	< LOQ	< LOQ
CBD	0.0100	7.438	0.7438
CBN	0.0100	< LOQ	< LOQ
CBG	0.0100	0.21	0.0210
CBC	0.0100	< LOQ	< LOQ
Sum of tested Cannabinoids	0.0100	7.939	0.7939



"Total THC" and "Total CBD" are calculated values and are an Oregon reporting requirement (OAR 333-064-0100). For Cannabinoid analysis, only delta 9-THC, THCA, CBD, CBDA are ORELAP accredited analytes. Cannabinoid values reported for plant matter are dry weight corrected; Oregon Water Activity action level is 0.65Aw and Oregon Moisture Content action level is 15%. Samples above limit will be highlighted RED; FD = Field Duplicate; LOQ = Limit of Quantitation.

Ian Riversong
 Laboratory Director - 6/21/2019

Page 1 of 2

EVIO Labs Medford (pka Kenevir Research)
540 East Vilas Road, Suite F, Central Point, OR 97502
541-668-7444 / OLCC 010-1001626980D / www.EVIOLabs.com

Quality Control

Batch: M19F068 - SOP.T.30.050 Prep for Cannabinoids

Blank(M19F068-BLK1)			Extracted: 06/20/19 14:01		Analyzed: 06/20/19 15:14		
Analyte	Result	LOQ	Recovery Limits	Analyte	Result	LOQ	Recovery Limits
THCA	< LOQ	0.0100 (%)	< LOQ	delta 9-THC	< LOQ	0.0100 (%)	< LOQ
delta 8-THC	< LOQ	0.0100 (%)	< LOQ	CBDA	< LOQ	0.0100 (%)	< LOQ
CBD	< LOQ	0.0100 (%)	< LOQ	CBG	< LOQ	0.0100 (%)	< LOQ
CBN	< LOQ	0.0100 (%)	< LOQ	CBC	< LOQ	0.0100 (%)	< LOQ
Sum of tested Cannabinoid:	< LOQ	0.0100 (%)	< LOQ				

LCS(M19F068-BS1)			Extracted: 06/20/19 14:01		Analyzed: 06/20/19 15:31		
Analyte	% Recovery	LOQ	Recovery Limits	Analyte	% Recovery	LOQ	Recovery Limits
THCA	125	(%)	70-130	delta 9-THC	99.6	(%)	70-130
CBDA	105	(%)	70-130	CBD	102	(%)	70-130



Ian Riversong
 Laboratory Director - 6/21/2019