

EVIO Labs Medford (pka Kenevir Research)  
 540 East Vilas Road, Suite F, Central Point, OR 97502  
 541-668-7444 / OLCC 010-1001626980D / www.EVIOLabs.com

**D300**  
**Keen CBD**  
**AG-R1044796IHH**



**Confident Cannabis ID:** 1904KR0123.1594  
**Sample ID:** M190533-01  
**Matrix:** Tincture  
**METRC Batch #:**  
**Sampling Method/SOP:** SOP.T.20.010  
**Date Sampled:** 04/23/19 09:00  
**Date Accepted:** 04/23/19  
**Harvest/Process Lot ID:** 4242

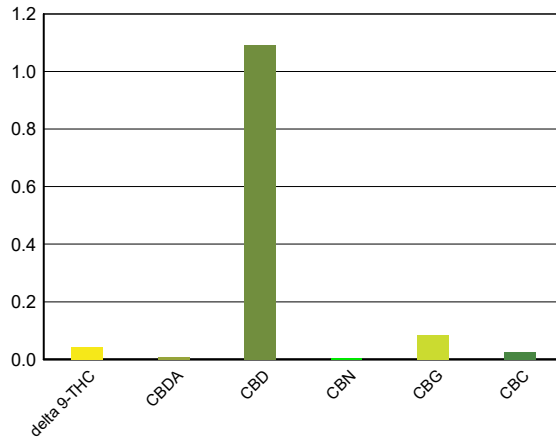
**Batch ID:**  
**Batch Size (g):**  
**Unit for Sale:**  
**Harvest/Production Date:**

## Cannabinoid Analysis

Date/Time Extracted: 04/25/19 11:59  
 Date/Time Analyzed: 04/25/19 18:25

Analysis Method/SOP: SOP.T.40.020

Cannabinoids	LOQ(%)	mg/g	% weight	Cannabinoid Profile
<b>Total THC</b> ((THCA*0.877)+Δ9THC)		<b>0.419</b>	<b>0.0419</b>	
<b>Total CBD</b> ((CBDA*0.877)+CBD)		<b>10.97</b>	<b>1.097</b>	
THCA	0.0100	< LOQ	< LOQ	
delta 9-THC	0.0100	0.419	0.0419	
delta 8-THC	0.0100	< LOQ	< LOQ	
CBDA	0.0100	< LOQ	< LOQ	
CBD	0.0100	10.91	1.091	
CBN	0.0100	< LOQ	< LOQ	
CBG	0.0100	0.854	0.0854	
CBC	0.0100	0.263	0.0263	
Sum of tested Cannabinoids	0.0100	12.55	1.255	



"Total THC" and "Total CBD" are calculated values and are an Oregon reporting requirement (OAR 333-064-0100). For Cannabinoid analysis, only delta 9-THC, THCA, CBD, CBDA are ORELAP accredited analytes. Cannabinoid values reported for plant matter are dry weight corrected; Oregon Water Activity action level is 0.65Aw and Oregon Moisture Content action level is 15%. Samples above limit will be highlighted RED; FD = Field Duplicate; LOQ = Limit of Quantitation.

Ian Riversong  
 Laboratory Director - 4/26/2019

**EVIO Labs Medford (pka Kenevir Research)**  
**540 East Vilas Road, Suite F, Central Point, OR 97502**  
**541-668-7444 / OLCC 010-1001626980D / www.EVIOLabs.com**

## Quality Control

**Batch: M19D111 - SOP.T.30.050 Prep for Cannabinoids**

<b>Blank(M19D111-BLK1)</b>			<b>Extracted: 04/25/19 11:59</b>		<b>Analyzed: 04/25/19 15:14</b>		
<b>Analyte</b>	<b>Result</b>	<b>LOQ</b>	<b>Recovery Limits</b>	<b>Analyte</b>	<b>Result</b>	<b>LOQ</b>	<b>Recovery Limits</b>
THCA	< LOQ	0.0100 (%)	< LOQ	delta 9-THC	< LOQ	0.0100 (%)	< LOQ
delta 8-THC	< LOQ	0.0100 (%)	< LOQ	CBDA	< LOQ	0.0100 (%)	< LOQ
CBD	< LOQ	0.0100 (%)	< LOQ	CBG	< LOQ	0.0100 (%)	< LOQ
CBN	< LOQ	0.0100 (%)	< LOQ	CBC	< LOQ	0.0100 (%)	< LOQ
Sum of tested Cannabinoid:	< LOQ	0.0100 (%)	< LOQ				

<b>LCS(M19D111-BS1)</b>			<b>Extracted: 04/25/19 11:59</b>		<b>Analyzed: 04/25/19 15:32</b>		
<b>Analyte</b>	<b>% Recovery</b>	<b>LOQ</b>	<b>Recovery Limits</b>	<b>Analyte</b>	<b>% Recovery</b>	<b>LOQ</b>	<b>Recovery Limits</b>
THCA	93.8	(%)	70-130	delta 9-THC	98.2	(%)	70-130
CBDA	98.3	(%)	70-130	CBD	94.6	(%)	70-130



**Ian Riversong**  
**Laboratory Director - 4/26/2019**